

ORDINANCE NO. 48-09
(Pertaining to the Correction of the Official Zoning Maps)

WHEREAS, pursuant to the authority contained in Article 66B of the Annotated Code of Maryland, the Board of County Commissioners of Calvert County has the general powers to promulgate and amend comprehensive plans, zoning maps and ordinances and has heretofore adopted the Official Zoning Maps of Calvert County pursuant thereto; and

WHEREAS, on April 25, 2006, after a duly advertised public hearing, a new Calvert County Zoning Map was adopted through the passage by the Board of County Commissioners of Resolution Number 10-06, with an effective date of May 1, 2006; and

WHEREAS, the purpose of the new Zoning Map was to combine specified Zoning Districts, and not to rezone individual properties; and

WHEREAS, an error was discovered after the adoption of the new Zoning Map, that error being located on Map 31; and

WHEREAS, the error detected occurred when the map approved by the Board of County Commissioners on April 25, 2006 was reproduced, and

WHEREAS, in order for the adopted maps to conform with the maps that were duly advertised and subsequently approved, this Amendatory Ordinance must be enacted.

NOW, THEREFORE, BE IT RESOLVED AND ORDAINED by the Board of County Commissioners of Calvert County that the Official Zoning Maps of Calvert

County enacted by resolution 10-06, BE and the same hereby ARE corrected as set forth in attached Exhibit A;

BE IT FURTHER RESOLVED AND ORDAINED, that this amendatory Ordinance shall be in force and effect as of the date set forth below.

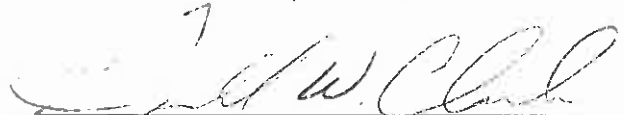
DONE, this 1 day of December, 2009, by the Board of County Commissioners of Calvert County, Maryland sitting in regular session.

ATTEST:


BOARD OF COUNTY COMMISSIONERS OF CALVERT COUNTY, MARYLAND

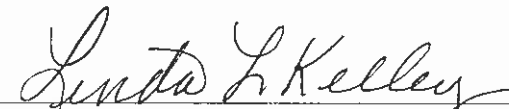

Corinne J. Cook, Clerk



Wilson H. Parran, President


Gerald W. Clark, Vice-President

Approved for legal sufficiency on 10/30/09 by:


Emanuel Demedis
County Attorney

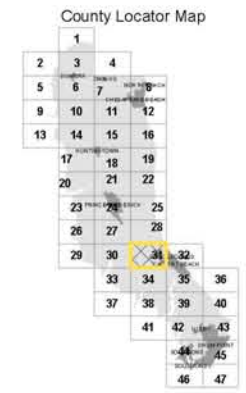
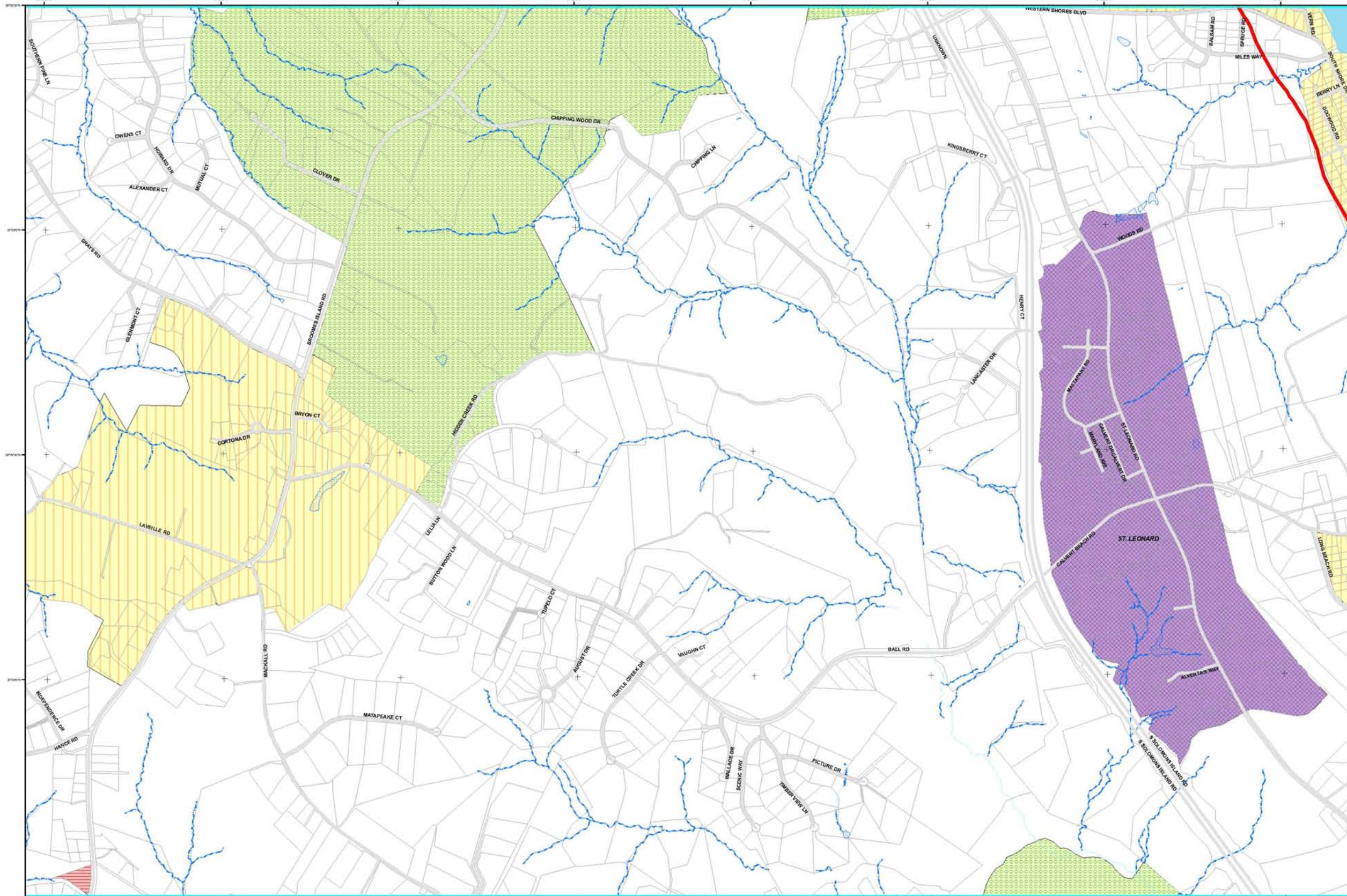

Linda L. Kelley


Susan Shaw


Barbara A. Stinnett

Received for Record December 31, 2009 at 11:15 o'clock A.M. Same day recorded in Liber KPS No. 31 Form 4202 COUNTY COMMISSIONERS ORDINANCES AND RESOLUTION.





- Map Key**
- Zoning Districts**
- EC - Employment Center
 - FFD - Farm and Forest District
 - I-1 - Light Industrial
 - MC - Marine Commercial
 - RC - Rural Commercial
 - RD - Residential District
 - RUR - Rural Community District
 - TC - Town Center
 - WL - Wetlands
- Incorporated Town**
- Chesapeake Beach
 - North Beach
- Critical Area**
- 1000' C.A.L.
- Base Layers**
- Stream
 - Parcel
 - Street
 - Pond

* If zoning boundaries were created by Resolution, then notes and sound descriptions take precedence.
 ** Wetlands intended to follow boundaries defined by the Maryland Department of the Environment's (MDE) Wetland and Waterways Program.



Map No.
31

Calvert County Dept. of Planning and Zoning
 Address: County Services Plaza
 150 Main Street
 P.O. Box 36
 Pines Beach, MD 20676
 Phone: (410) 326-1000 or (301) 965-1243
 Hours of Operation: Mon-Fri 8:30 a.m. - 4:30 p.m.

Zoning Map
 Effective: May 01, 2006
 Revision: April 22, 2008. - ORDINANCE NO. 25-08

Maximum allowable noise levels have been set by Maryland State Department of the Environment, Regulation 26.02.03.02.
 Zoning Level Measure
 Industrial 70dBA L₂₄
 Commercial 64 dBA L₂₄
 Residential 55dBA L₂₄

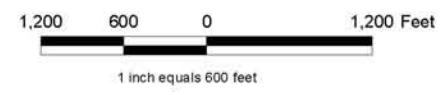


Exhibit B – Corrected Zoning Map 31