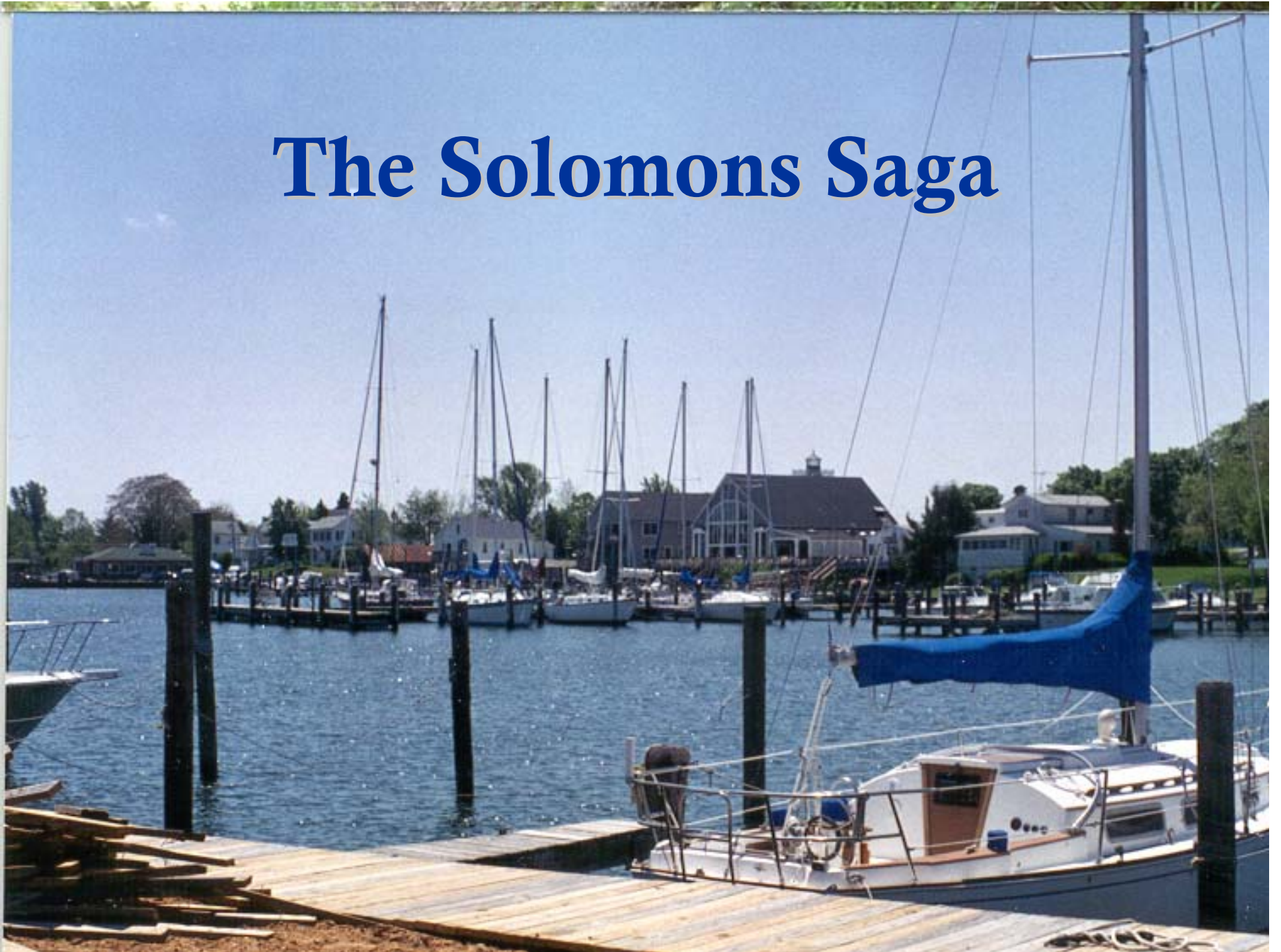


The Solomons Saga



The Vision:

- The Solomons Town Center Improvements are designed create a special place for both residents and visitors, defined by water access, amenities and opportunities.
- The amalgamation of place, opportunity and partnerships have made this vision become a reality.



1986 Adoption of the Solomons Town Center Master Plan

- “The Plan will direct future growth and development within the Solomons Town Center.”



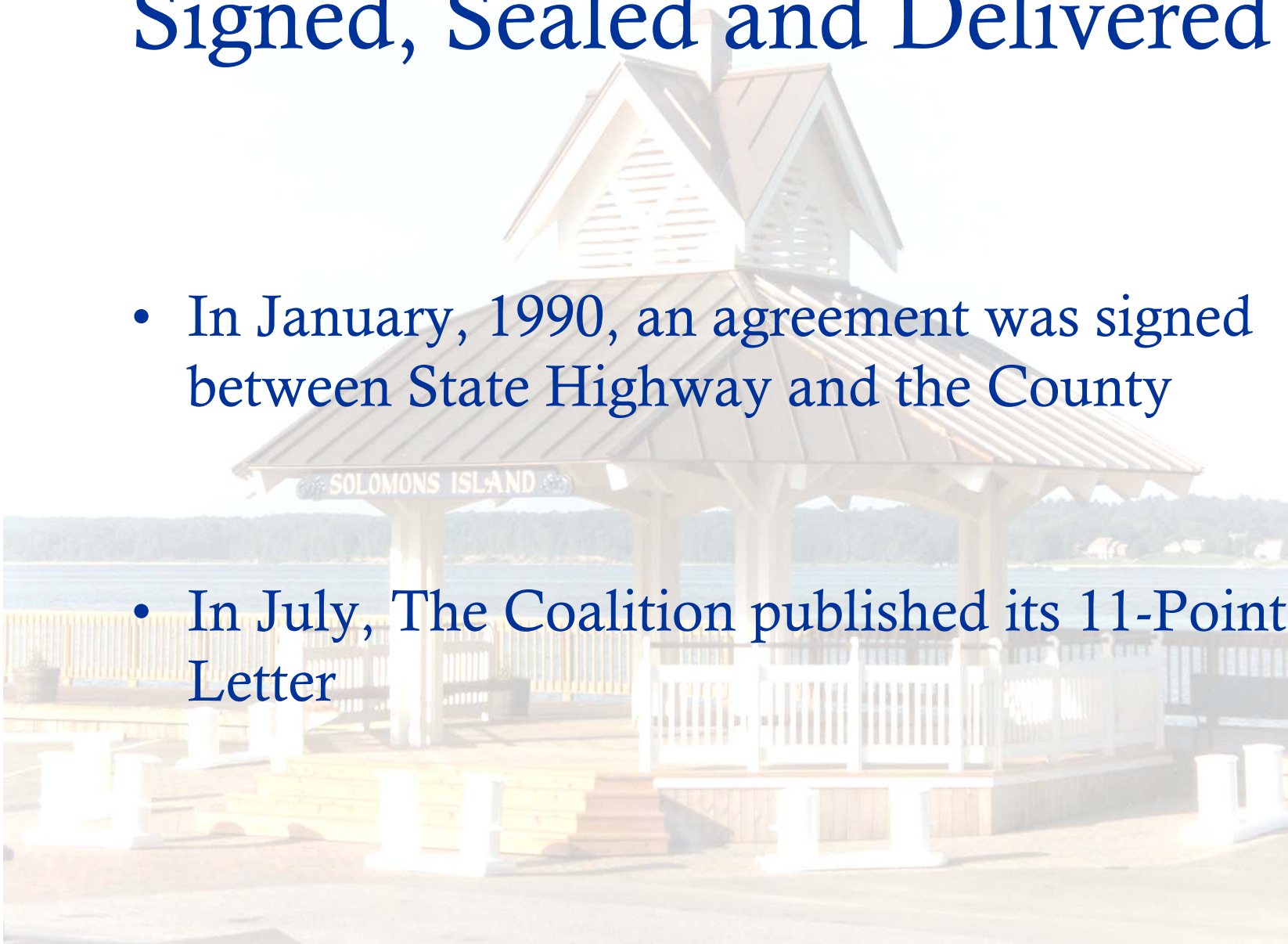
1988 Solomons Briefing Paper



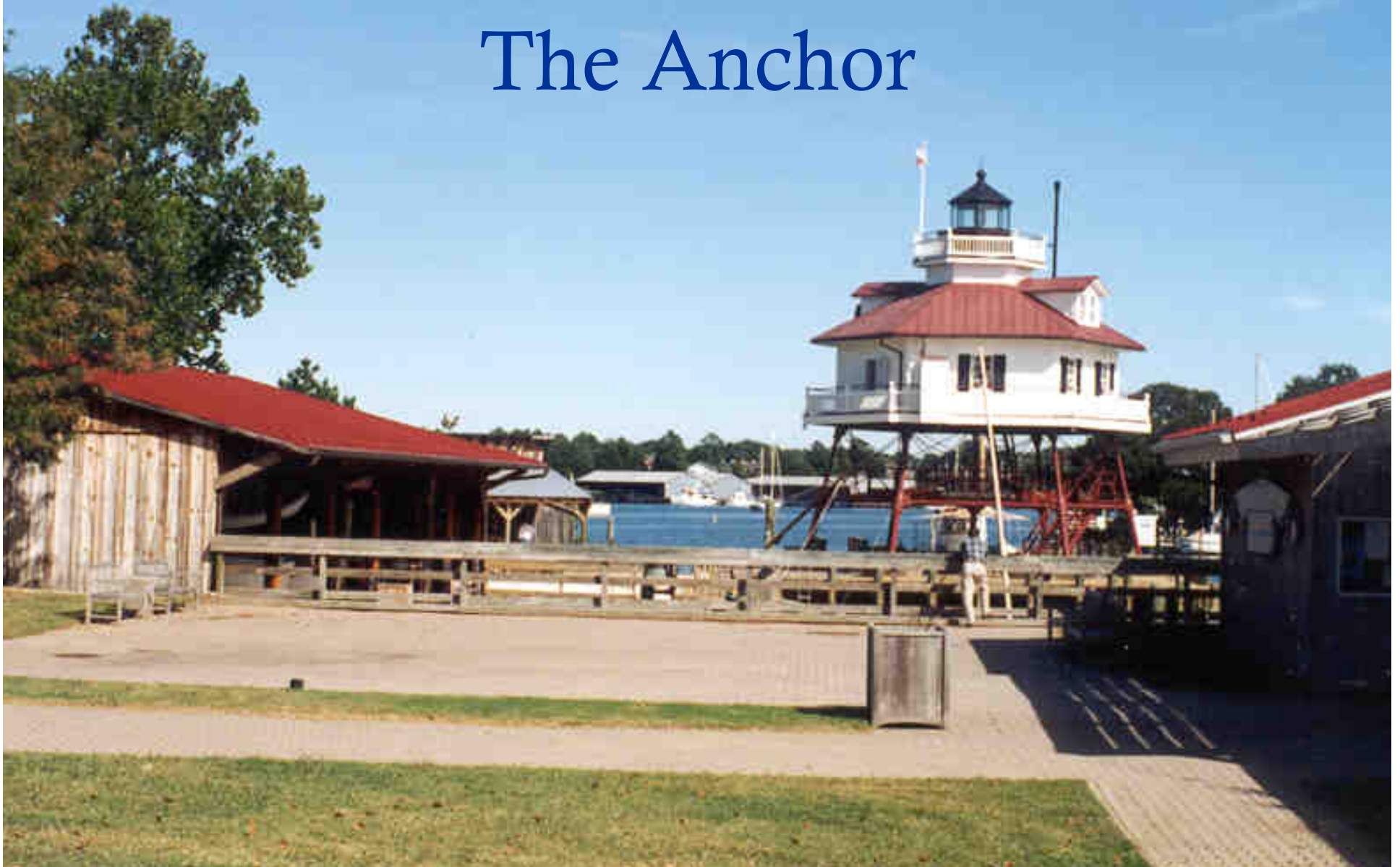
- Published by the Solomons Coalition, followed by two “Charettes” directed by the State
- Resulted in an “Agreement In Principal” between the State, County and Coalition.

Signed, Sealed and Delivered

- In January, 1990, an agreement was signed between State Highway and the County
- In July, The Coalition published its 11-Point Letter



Calvert Marine Museum: The Anchor



1988 Information Center





1991 Comfort Station



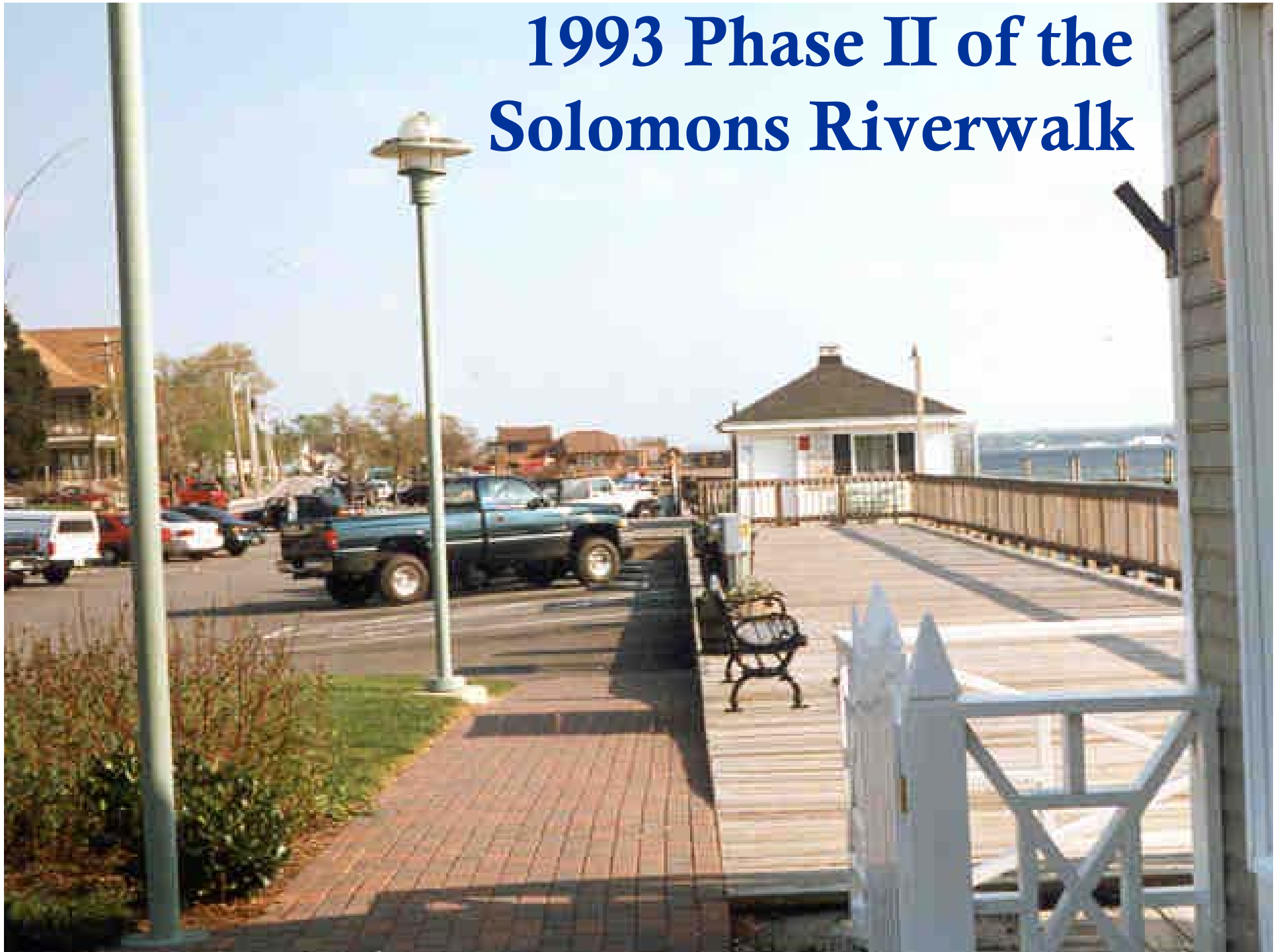
1992 South Section of Riverwalk





1993 Public Parking Lot

1993 Phase II of the Solomons Riverwalk



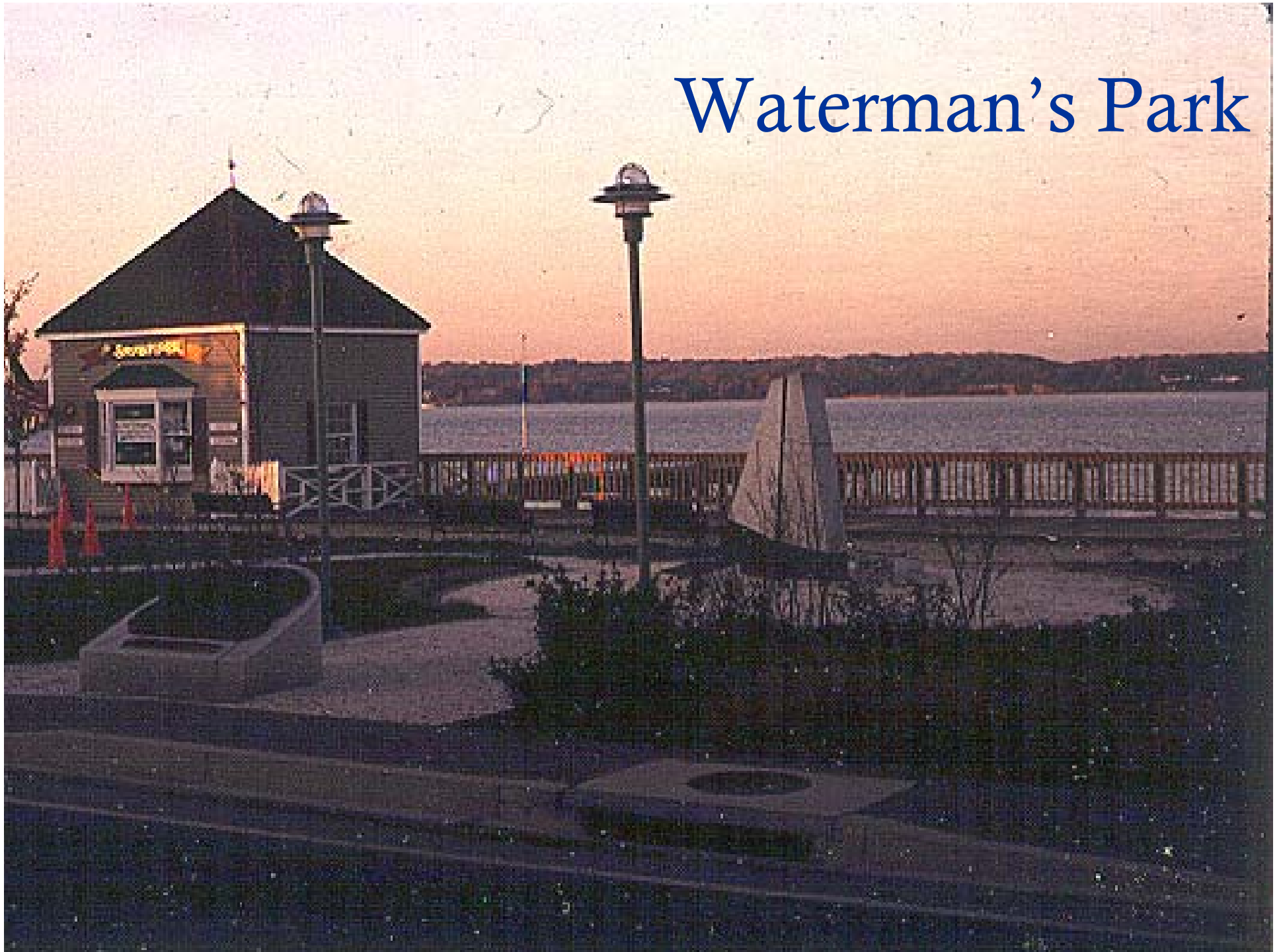
Sidewalks



1993



Waterman's Park







- Annmarie Garden, a public sculpture garden, opened to the public in 1993

1994 Solomons Fishing Pier



1995 Entrance Landscaping



1997 Pavilion Completed





Traffic Pattern
Altered

11 9:31 AM

1998 Sandpiper Shop





11 10:03 AM



2001 Phase II of the Sidewalk

11 9:41 AM

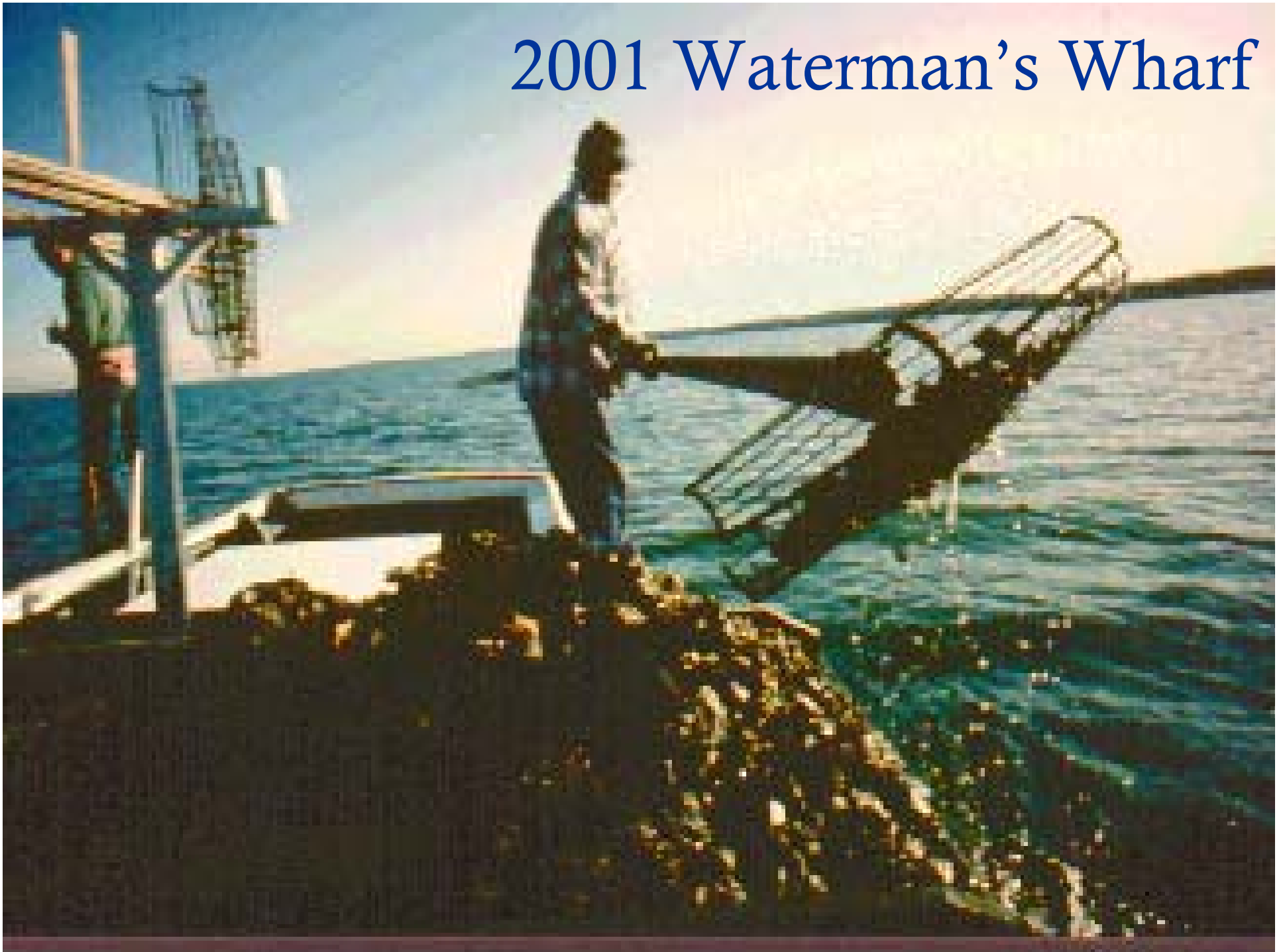




11 9:38 AM



2001 Waterman's Wharf



Waterman's Wharf 2001

WATERMAN'S
WHARF
SOLOMONS, MD.

11 9:47 AM

Spirit of Solomons



PROJECT PHASING	TOTAL COST	PRIVATE	COUNTY	STATE
PHASE I: THRU FY90				
Boat Ramp/Bulkhead/Pier and Comfort Station	\$779,299			\$779,299
Parking Lot Expansion	\$75,281			\$75,281
Information Center	\$179,360		\$89,680	\$89,680
Sidewalk Demo Project	\$20,000			\$20,000
Feasibility:Breakwater	\$100,000			\$100,000
PHASE II: THRU FY93				
Comfort Station	\$644,639		\$504,639	\$140,000
Pump-Out	\$9,339			\$9,339
Park Design	\$112,226	\$16,333	\$95,893	
Riverwalk South	\$152,188		\$102,188	\$50,000
Repair Bulkhead South	\$250,000			\$250,000
Church Parking Lot	\$228,489		\$178,489	\$50,000
PHASE III: 1994-95				
Fishing Pier & Parking	\$251,978		\$46,978	\$205,000
Resurface Roadway	\$500,000			\$500,000
Construct Sidewalks	\$187,925		\$82,925	
Rip Rap on Bulkhead	\$1,000,000			\$1,000,000
Riverwalk & Park	\$568,075	\$58,075	\$41,000	\$319,000
Landscaping	\$100,000		\$100,000	
Redo Parking Lot	\$36,255		\$36,255	
PHASE IV: 1995-97				
Pavilion	\$145,000		\$145,000	
Sidewalks	\$130,000		\$80,000	\$50,000
PHASE V: 1999-2000				
Waterman's Wharf	\$175,000	\$0	\$75,000	\$100,000
Sidewalk Phase II	\$363,000		\$213,000	\$150,000
TOTAL	\$6,008,054.00	\$74,408.00	\$1,791,047.00	\$3,887,599.00

The Saga Continues...

